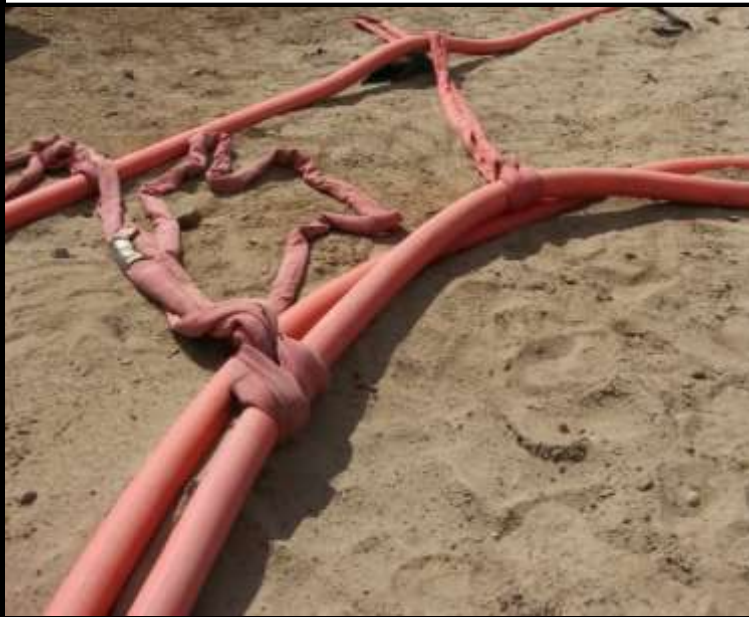




# Product Data Sheet

## Cable Handling Grabs - Dragging Only

To provide proper Strain Relief to your electrical cables during manual relocation, Mine Cable Services highly recommends the use of **Cable Handling Grabs** for dragging applications. Designed from solid, cast aluminum, the cable cradle and clamping system apply even load and pressure to your cable or hoses, while providing a firm grip to prevent cable slippage. The arc of the cradle provides a constant bend radius for the cable, preventing over bending and cable pinching, a common cause of conductor or pilot damage.



**Shown Above:** Slings commonly used to relocate trailing cable on site, causing internal damage or overbending of electrical cable



**Shown Above:** Cable Handling Grab designed specifically for properly cradling cable during trailing cable relocation

### Advantages of Cable Handling Grabs for Dragging Applications:

- Designed for manual cable relocation
- Simple to use – easily attaches to cable by placing over the cable on the ground
- Centralized clamp automatically closes on the cable when the Cable Grab is moved
- Solid, rugged, cast aluminum body, yet lightweight for single person carry
- Available in various body sizes and cable diameter ranges to provide the best required fit
- Nylon woven sling capacity up to 2 tonnes of pull
- Easily attaches to hitch of site vehicles for easy relocation
- Provides strain relief and protection from overbending trailing cable during relocation by maintaining minimum bend radius
- Avoids excess tension or tangling of cables often encountered using slings

**Please See Back Page for Ordering Information**

Mine Cable Services Corporation 7731 – 16<sup>th</sup> Street NW, Edmonton, Alberta, Canada, T6P 1M1  
Phone. (780) 439-1113 Website: [minecableservices.ca](http://minecableservices.ca) Email: [sales@minecableservices.ca](mailto:sales@minecableservices.ca)



# Product Data Sheet

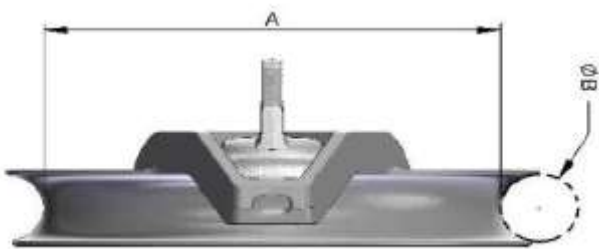
## Cable Handling Grabs - Dragging Only



### Cable Handling Grabs Ordering Information:

#### Cable Grab Sizing Chart:

Part Number:	Bend Radius (A):	Cable Diameter Range (B):
CHG400/45/D	400mm	45mm (1.75" approx.)
CHG400/50/D	400mm	50mm (2.00" approx.)
CHG400/60/D	400mm	60mm (2.375" approx.)
CHG450/65/D	450mm	65mm (2.50" approx.)
CHG450/70/D	450mm	70mm (2.75" approx.)
CHG450/75/D	450mm	75mm (2.95" approx.)
CHG500/80/D	500mm	80mm (3.125" approx.)
CHG500/90/D	500mm	90mm (3.50" approx.)
CHG500/115/D	500mm	115mm (4.50" approx.)
CHG600/90/D	600mm	90mm (3.50" approx.)
CHG600/100/D	600mm	100mm (3.90" approx.)
CHG600/110/D	600mm	110mm (4.375" approx.)
CHG600/115/D	600mm	115mm (4.50" approx.)
CHG700/120/D	700mm	120mm (4.75" approx.)



Mine Cable Services Corporation 7731 - 16<sup>th</sup> Street NW, Edmonton, Alberta, Canada, T6P 1M1  
 Phone: (780) 439-1113 Website: [minecableservices.ca](http://minecableservices.ca) Email: [sales@minecableservices.ca](mailto:sales@minecableservices.ca)