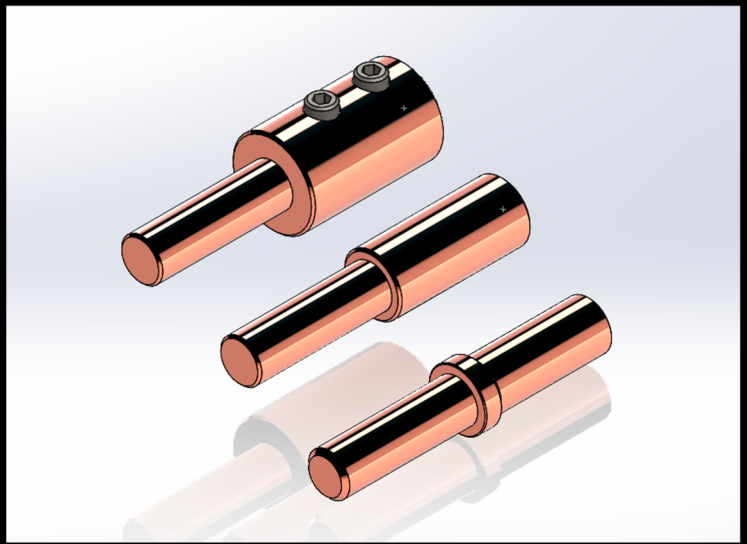




# Product Data Sheet Posiclamps & Posipins



**PC1-xx:** Posiclamps, up to 1/2" diameter pin  
**PC2-xx:** Posiclamps, 5/8" to 7/8" diameter pin

**CUSPxx-xxx:** Copper Posipin

## Applications

- Posiclamps and Posipin electrical connection systems provide a speedy, safe, and fool proof method of connecting cable to your power supply, including junction boxes and transformer boxes.

## Features and Benefits

- Manufactured from bronze castings and machined in house at MCS facility in Edmonton, Canada, posiclamps are sized to accommodate a range of pins sized up to 7/8" diameter
- Posipins are sized according to the specific cable conductor size and diameter
- Posipins are available in copper material
- MCS Posipins are offered in three different connection options: mechanical set screw connection, compression connection, and solder back connection.
- On premise silver plating of copper posipins is available



## Safety Information

The use of a Posiclamp and Posipin connection system is a common way to reduce the potential for cross-mating phases and conductors from one cable to the next at the connection point.

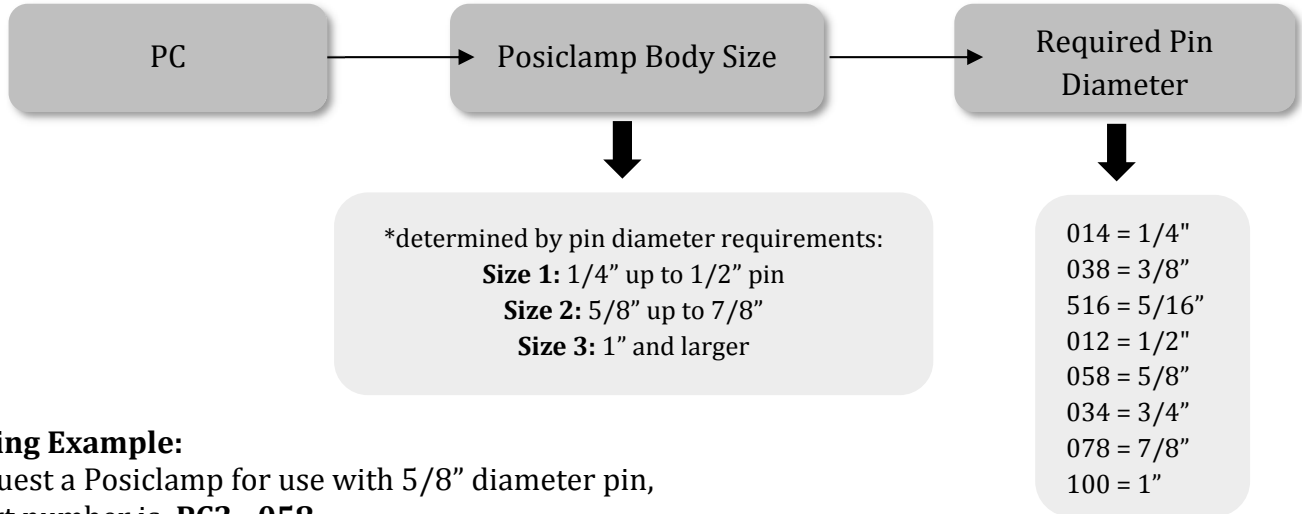
Posipins are manufactured to fit cable conductors accurately. Each phase, ground, and ground check pin has a different diameter tip in order to correctly connect to the proper mating cable phase, ground, or ground check within your equipment.

Mine Cable Services Corporation 7731 - 16<sup>th</sup> Street NW, Edmonton, Alberta, Canada, T6P 1M1  
Phone. (780) 439-1113 Website: [minecableservices.ca](http://minecableservices.ca) Email: [sales@minecableservices.ca](mailto:sales@minecableservices.ca)



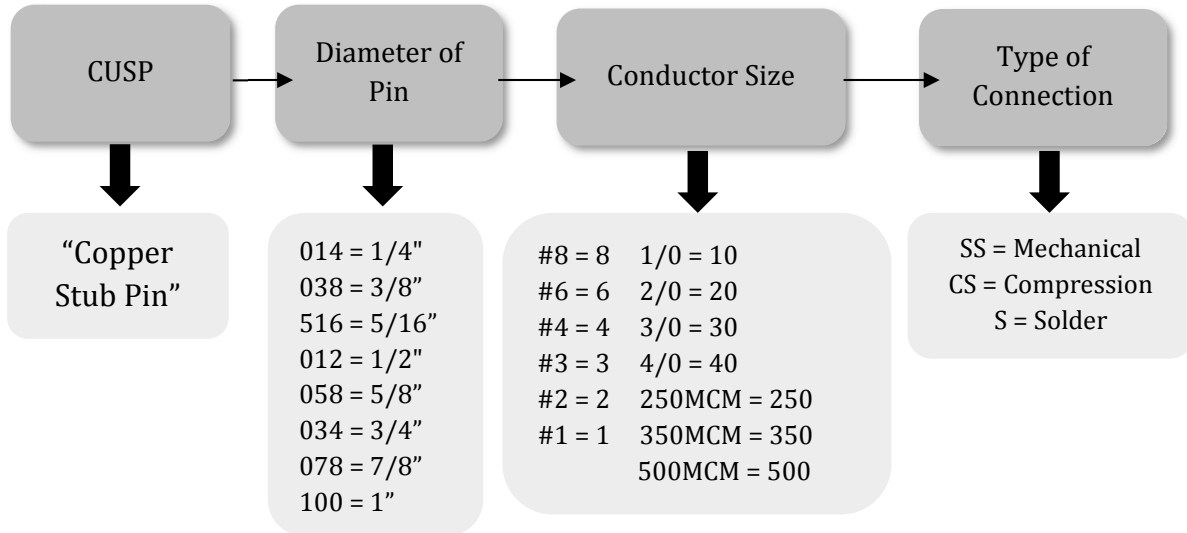
# Posiclamps & Posipins

## How to order MCS Posiclamps & Posipins:



### Ordering Example:

To request a Posiclamp for use with 5/8" diameter pin, the part number is: **PC2 - 058**



## Copper Posipins and Posiclamps Ampacity Ratings:

Copper Posipin Part Number:	Pin Size:	Pin Ampacity:
CUSP38-xx	3/8" diameter	200A
CUSP12-xx	1/2" diameter	300A
CUSP58-xx	5/8" diameter	550A
CUSP34-xx	3/4" diameter	700A
CUSP78-xx	7/8" diameter	800A

Posiclamp Part Number:	Related Posipin Sizing:	Clamp Ampacity:
PC1-xx	Up to 1/2" diameter posipin	300A
PC2-xx	5/8" to 7/8" diameter posipin	550A
PC3-xx	1" diameter posipin	600A